



PROFILE 2019

GOOILTECH
CO., LTD

CONNECTING TO
SUCCESS



GOOILTECH CONNECTING TO SUCCESS

CONTENT

04	Open letter		
05	Vision, Mission, Core Value	14	Capacity of Fabrication
06	Activities	16	Capacity of Installation
08	Occupation safety, health and Quality Policy	24	Some Typical Contracts
10	Manpower resource	26	Award, Certificates
12	Equipment and machinery capacity		

GOOILTECH

Open Letter



“TAKING ADVANTAGE OF THE COMPANY’S STRENGTHS AND THE GOOD SIGNS OF THE MARKET, GOOILTECH WILL RETAIN IT’S POSITION AND SUSTAINABLE GROWTH UP TO 2025”

First of all, Gooiltech Limited Company would like to show best regards to the dear customers, partner !

Gooiltech Ltd was founded in 2014, has the head office at No 395, Hung vuong Road, Hung Vuong Ward, Hong Bang District, Hai Phong City, Viet Nam.

Gooiltech specializes on:

- Design, Fabrication, Installation, Repair, Maintenance of industrial project (Thermal power, Petrochemical, Cements, Steel plants...)
- Precision Mechanical Fabrication.
- Blasting and Painting (Polibrid, Flake Lining...)

With the motto *“Connecting to success”*, Gooiltech is always meet the demands of Clients and considers the quality, progress assurance as our top goal.

We look forward to cooperating with our customers with the target:

“Share - Cooperate - Sustainable Development”

WE ARE PLEASED TO COOP-

VISION, MISSION CORE VALUE



VISION

Continuously develop to become a leading company in installing, manufacturing & fabricating fields.



MISSION

We not only create high-quality products and services that meet the needs of our customers, but also bring high value to the community and contribute to social development.



CORE VALUE

Innovation: Gooiltech constantly researches and innovates the production process with the goal of bringing high efficiency, energy saving and environmental friendliness.

Profession: Gooiltech’s employees are constantly learning, exchanging expertise, trying to overcome challenges and maintain stability in high-pressure jobs.

Efficiency: Gooiltech considers the work efficiency as an important and decisive factor when implementing Projects.

Reputation: Gooiltech considers the belief of customers and considers trust as the decisive factor for success.

Dedication: Gooiltech always maintains the rule of law, professional ethics and considers customer satisfaction as a measure of development.

ACTIVITIES

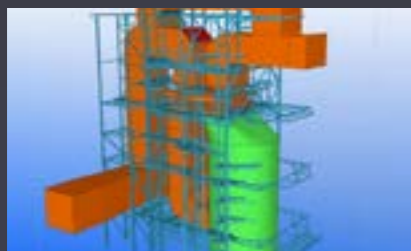
We provide customer with the best service and best quality

Why choose Us?

Gooiltech is committed to putting the interests of customer first and talking quality, progress is the top goal.



CONSULTANCY
AND DESIGN



FABRICATION



PRECISION
MECHANICAL



MAINTENANCE,
INSTALLATION



BLASTING AND
PAINING



BUSSINESS AND
TRADING



OCCUPATION SAFETY & HEALTH POLICY

To ensure that all activities within the company are carried out safely in a safe working environment for all employees, customers and communities within the Company's control; To ensure the safety for equipment and assets of the Company as well as customers and the community.

To commit to comply with all legal requirements and local community requirements as well as requests from customers.

To commit to take all precautionary measures to prevent injuries and health impairments for all employees, customers and communities within the Company's control

To ensure the training and provide appropriate information to staffs and subcontractors regarding safety standards and safety regulations as well as safety instructions when working

To ensure the establishment and maintenance of occupational health and safety management systems in accordance with OHSAS 18001: 2007 to prevent and minimize the risk of unsafety and occupational health hazards; to constantly improve to perfect the system.

“ SAFETY BRINGS HAPPINESS TO PEOPLE, FAMILIES AND ENTERPRISES”

QUALITY POLICY

1

To let Gooiltech become one of the leading companies in fabrication, Installation, repair and Maintenance

2

To meet the increasing demand of clients and markets

3

To prioritize in enhancing the resources to achieve the target of “Safety - Quality - Progress - Efficiency”

4

To continously improve techlonogy, equipment, management and create a modern and professional working environment.

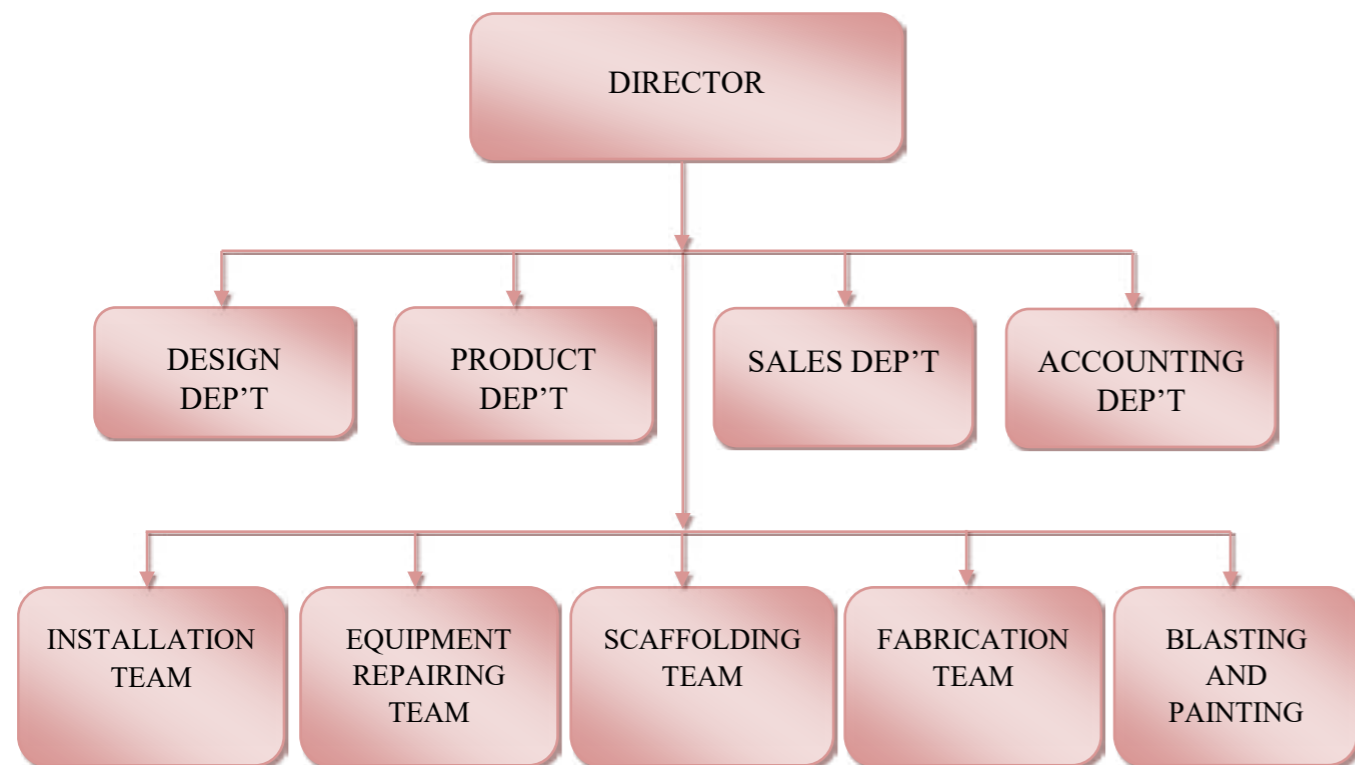
5

To organize, manage and execute adequately all production and business aspects. regularly operate, maintain and upgrade the quality management system of ISO 9001 : 2015 to gradually increase the quality

MANPOWER

Gooiltech Company always considers human resources as a decisive factor to the quality and efficiency of production and business, we understand "Human is the subject of building the source of knowledge and the decisive factor for success of the business".

ORGANIZATION CHART



PROFESSION, CREATION, INNOVATION



Gooiltech has always focused on developing human resources, conducting a comprehensive assessment to build long term, high quality, sustainable inheritance and respond the development goals of the Company.

No.	MANPOWER RESOURCES	QUANTITY
I	INDIRECT MANPOWER	22
1	Boad of Director	2
2	Staff in charge of Safety	1
3	QA-QC Staff	3
4	Design Engineer	6
5	Supervisor	3
6	Admin staff	2
7	Accountant	2
8	Equipment and Materials management staff	3
II	DIRECT MANPOWER	180
1	6G Welder	15
2	3G Welder	20
3	Scaffolder	70
4	Fitter	15
5	Pipe Wroker	15
6	Blaster and Painter	12
7	Electrican	3
8	Processing and Fabrication worker	30
III	OTHER RESOURCES	30
	Total	232



EQUIPMENT AND MACHINERY CAPACITY

Gooiltech is owning a wide range of machinery and equipment that are using in the field of precision mechanical processing, steel structure fabrication and meet the technical & safety requirements of projects. big as thermal power plants, cement plants, oil refineries

Gooiltech always considered machinery and equipment as a companion during the process of construction and development



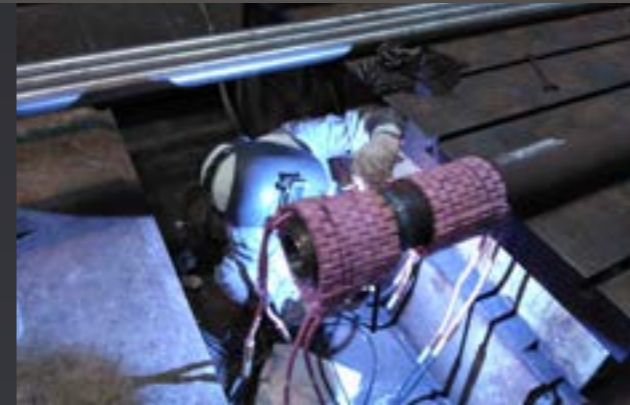
No.	TYPE OF EQUIPMENT	ORIGIN	TECHNICAL SPECIFICATION
I EQUIPMENT FOR PRECISION MECHANICAL FABRICATION			
1	Milling Machine OKK CMV 630	Japan	
2	CNC - Milling Machine SHIZUOKA	Japan	
3	Lathe Machine Hitachi	Japan	
4	CNC - Lathe Machine MORISEIKI	Japan	
5	Band Saw Machine HD350	Japan	D: 350 mm
II EQUIPMENTS FOR FABRICATION AND INSTALLATION			
1	Amada Lazer Cutting	Japan	Capacity 2000 Kva
2	Band Saw machine HD600	Japan	D: 600 mm
3	Vertical Drill TOA800	Japan	
4	MIG Welding Machine 500A	Japan	Dòng hàn 500A
5	TIG Welding Machine WSM400IJ	Japan	
6	Gow Welding Machine	Japan	Dòng hàn 800A
7	Heating machine	Japan	
8	Electrodes Heating Oven E060M	Japan	
9	Chain Block (1T, 2T, 3T, 6T, 10T)	Korea	
10	Gas - Plasma cutting Machine	China	Thickness 6-100 mm
11	Gas - Plasma cutting Machine (Pipe)	China	D 4000 mm
12	Crane	Korea	Q = 5 Ton
III BLASTING AND PAINTING DEVICES			
1	Air Compressor	Japan	Capacity 55 Kw
2	Ultra High Pressure Pump UHP II C-2500	Singapore	Pressure: 2500 Bar
3	Painting Machine Graco XP70-HF	USA	Mix ratio 1:2
4	Painting Machine DSF 75	Korea	Scale 1:75
5	Manual blasting device	Viet Nam	Blasting by steel Grit
6	Humidity Machine SK-VNK-120	Japan	Capacity 65 Kw
IV INSSPECTION EQUIPMENT			
1	Concre Substrate - DFT machine Positector 200	USA	
2	Moisture Machine Elcometer 319	UK	
3	DFT machine Elcometer 456	UK	

CAPACITY OF FABRICATION

With comprehensive technology line as well as modern and precision machinery, our workshop at Km 12 + 500 Nam Hoa village, An Hung commune, An Duong district, Hai Phong city is met the requirements and standards of domestic and international customers.



FABRICATED PRODUCTS



CAPACITY OF INSTALLATION

What we do?

SAFETY - QUALITY - PROGRESS - EFFECIENCY



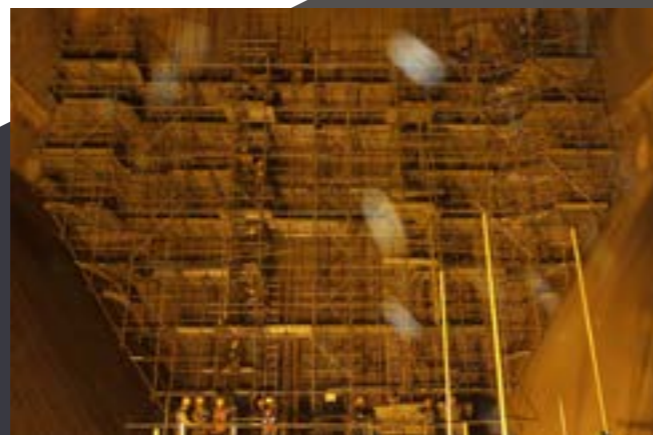
*Installation of Tie Valve
Mong Duong 2 Thermal Power Plant*



*Steam Piping Repair -
Mong Duong 2 Thermal Power Plant*



*Absorber heat exchangers Replacement
Mong Duong 2 Thermal Power Plant*

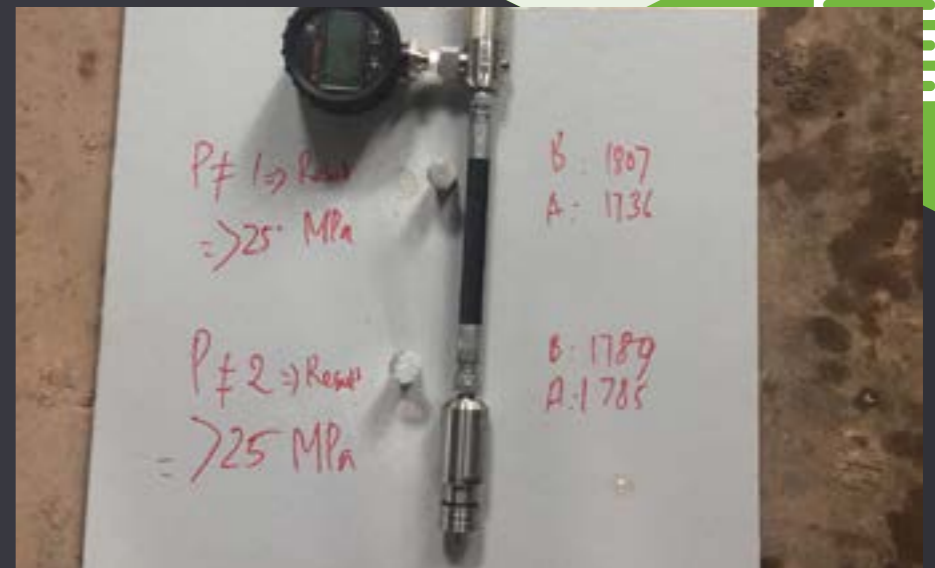


*Scaffolding Installation for Boiler Maintenance
Mong Duong 2 Thermal Power Plant*



*Blasting and Painting CWP (Polibrid)
Mong Duong 2 Thermal Power Plant*

BLASTING AND PAINTING



*FGD, SCR, Absorber (Flake Lining)
Blasting and painting Ceilcote
Ha Tinh Formosa Project*

FGD (Flake Lining) Blasting and Painting

NSRP Project



PROJECTS

Some typical Projects

1 MYANMAR CONCRETE PLANT
1/2017 - 3/2017
Installation Service Air and Steam Pipe Line

2 HAMADA CONVEYOR
1/2018 - 6/2018
Design and Deployment of Conveyor systems

3 MONG DUONG 2 TTP
2014 - NAY
Working as long - term Contractor

4 HA TINH FORMOSA PROJECT
11/2018 - 4/2019
FGD, SCR, Absorber
Blasting and Painting
Area: 800 M2
Caterogy: Ceilcote 370 Primer,
Ceilcote 282 Flakeline

5 NGHI SON REFINERY AND PETROCHEMICAL
4/2019 - 6/2019
FGD - B400 Blasting and Paiting
Area: 1000 M2
Caterogy: Ceilcote 370 - 380 Primer,
Ceilcote 282 Flakeline, Ceilcote 6640



SOME TYPICAL CONTRACTS

No.	PROJECT / WORK DESCRIPTION	EXECUTED VALUE (VND Billion)	EXECUTION PERIOD	CLIENT
1	Provide shop drawing for BOP structure	0.38	02/07/2015 - 08/01/2016	Lisemco 2 JSC
2	Supply manpower according - PO.VL-1300M2213	1.30	16/03/2016 - 4/5/2019	Main contractor for executing design, manufacture, erection structure and facilities for MD 1 thermal power plant
3	Supply materials, manpower for repair work of platform structure of boiler and cyclone	1.79	05/05/2016 - 06/06/2018	Main contractor for executing design, manufacture, erection structure and facilities for MD 1 thermal power plant
4	Installation of boiler tube erosion shield	2.71	03/07/2016 - 23/07/2016	Doosan Heavy Industry Viet Nam
5	Supply steel plates	6.72	19/12/2016	Marubeni Itochu Steel Viet Nam Ltd
6	Supply steel plates	5.49	4/5/2017	Marubeni Itochu Steel Viet Nam Ltd
7	Installation of boiler tube erosion shield Unit 2	2.58	11/05/2017 - 02/08/2017	Mong Duong Power Co. Ltd
8	Installation of boiler tube erosion shield and perforated support	3.62	22/06/2017 - 07/08/2017	Doosan Heavy Industry Viet Nam
9	Supply materials, manpower for repair and installation handrail system of Absorber	1.63	20/11/2017 - 18/01/2018	Mong Duong Power Co. Ltd
10	Supply manual high pressure gate valve Z61Y-2500LB F22 DN150	1.70	20/12/2017 - 27/03/2018	TND Trading and Service JSC

No.	PROJECT / WORK DESCRIPTION	EXECUTED VALUE (VND Billion)	EXECUTION PERIOD	CLIENT
11	Supply painting Materials for Pipe	1.60	16/07/2018	Main contractor for executing design, manufacture, erection structure and facilities for MD 1 thermal power plant
12	Supply materials, manpower, equipment for painting CWP at CW Header Unit S2	3.65	11/05/2018 - 09/08/2018	Mong Duong Power Co. Ltd
13	Supply materials, manpower for scaffolding installation - Electric equipment maintenance	1.32	28/05/2018 - 09/08/2018	Mong Duong Power Co. Ltd
14	Supply materials, manpower for scaffolding installation at Boiler	2.94	30/05/2018 - 09/08/2018	Mong Duong Power Co. Ltd
15	Supply materials, manpower, equipment for painting CWP at CW Header Unit S1	3.04	12/06/2018 - 20/09/2018	Mong Duong Power Co. Ltd
16	Supply materials, manpower for scaffolding installation - Electric equipment maintenance Unit S1	1.51	09/07/2018 đến 18/09/2018	Mong Duong Power Co. Ltd
17	Supply equipment and manpower for CWP Tie valve installation	1.81	31/08/2018 - 24/09/2018	Mong Duong Power Co. Ltd
18	Supply materials, manpower for scaffolding installation at Boiler Convective Area	1.26	24/09/2018 - 24/09/2018	Mong Duong Power Co. Ltd
19	Provide detail Tekla Drawing	0.88	01/11/2018 - 31/01/2019	SG1 Tech Co. Ltd
20	Supply materials, manpower for installation platform of AHS system	1.54	14/05/2018 - 20/02/2019	Mong Duong Power Co. Ltd
21	Blasting and painting for GGH - Formosa	1.59	28/11/2018 - 20/3/2019	Nguyen Hanh Trading and Industry JSC

AWARDS, CERTIFICATES



PARTNERS AND CLIENTS



PHUC KHANG



DUYEN HAI MACHENICAL



KIM THANH

*Customer satisfaction is
the success of Gooiltech*

CONTACT



Km 12+500, Highway 5, Nam Hoa Village, An Hung
Commune, An Dương District, Hai Phong City



+ 84 2258.832.732



bo.gooiltech@gmail.com

